



NOVUS

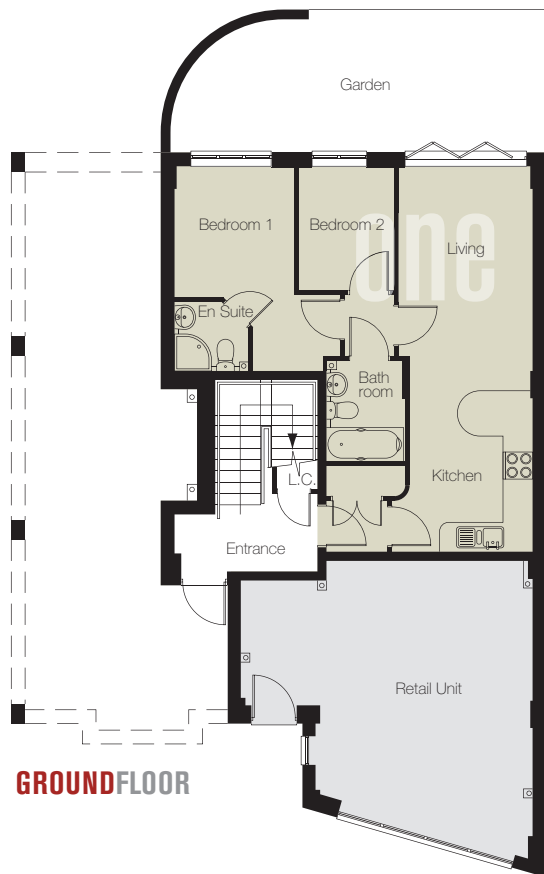
181 Hatfield Road

ST. ALBANS

FLOORPLANS

ST. ALBANS

All dimensions shown below are maximum room dimensions. In addition to the rooms described all apartments have an entrance lobby and a bathroom. Two bedroom properties also have an ensuite bathroom to the master bedroom. Not all the floor area of the second floor apartments is full standing height because they are housed in part in the roof. Townstone believes this brochure, the specification and the room dimensions are accurate. However, it does not guarantee that there may not be minor discrepancies. The brochure does not form any part of a contract.



GROUND FLOOR

apartment one

Kitchen/Living Room	8.45m	x	2.92m	27'9"	x	9'7"
Bedroom 1	4.41m	x	2.61m	14'6"	x	8'7"
Bedroom 2	2.65m	x	2.06m	8'8"	x	6'9"



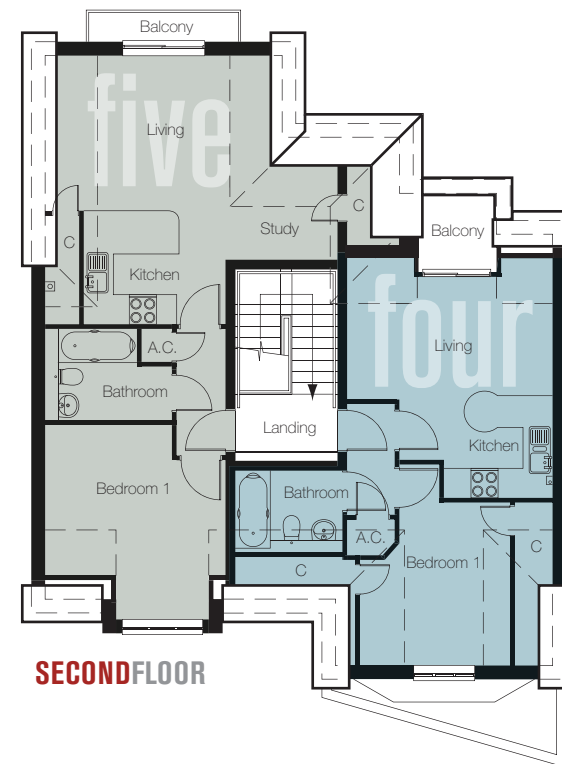
FIRST FLOOR

apartment two

Kitchen/Living Room	5.75m	x	4.45m	18'10"	x	14'7"
Bedroom 1	5.00m	x	2.60m	16'5"	x	8'6"
Bedroom 2	5.00m	x	2.00m	16'5"	x	6'7"

apartment three

Kitchen/Living Room	5.15m	x	5.15m	16'11"	x	16'11"
Bedroom 1	4.45m	x	3.50m	14'7"	x	11'6"
Bedroom 2	2.75m	x	2.45m	9'0"	x	8'0"



SECOND FLOOR

apartment four

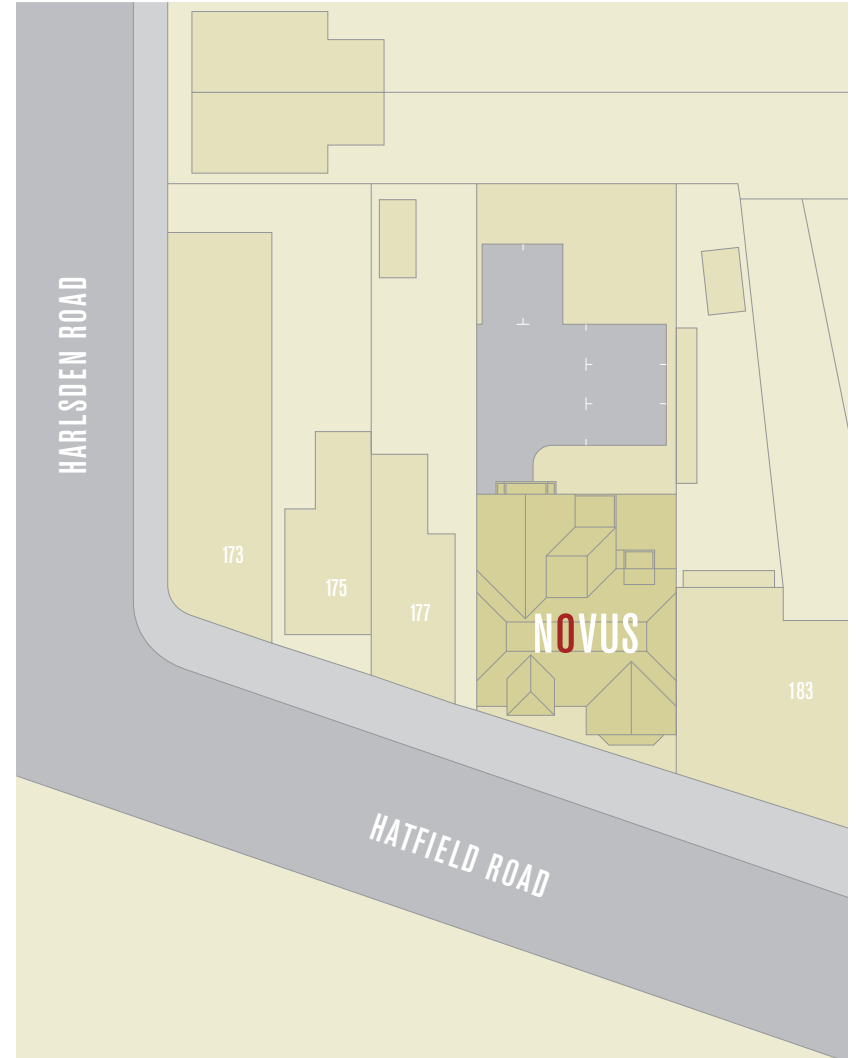
Kitchen/Living Room	5.25m	x	4.45m	17'3"	x	14'7"
Bedroom 1	4.40m	x	3.25m	14'5"	x	10'8"

apartment five

Kitchen/Living Room	6.10m	x	5.85m	20'0"	x	19'2"
Bedroom 1	4.20m	x	3.90m	13'9"	x	12'10"



NOVUS 181 Hatfield Road
St Albans, Hertfordshire AL1 4LG



T O W N S T O N E

Townstone Ltd
4 College Yard, Lower Dagnall Street
St Albans, Hertfordshire AL3 4PA
Tel: 01727 844433
www.townstone.co.uk